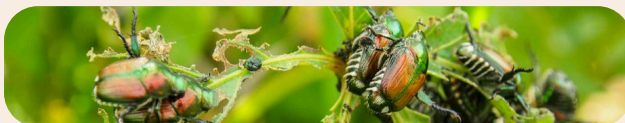


International Plant Protection Convention (IPPC)

- [Phytosanitary Certification system](#)
- [Regional and National Plant Protection Organisations \(RPPOs/NPPOs\)](#)
- [E-commerce guidelines](#) for safe plant trade and informative [video](#)
- [Newsletters](#)
- [Awareness raising resources](#)

CABI

- [Pest Risk Mapping tool](#)
- [Pest and disease resources](#)
- [Field guide for damage identification in woody plants](#)



European Plant Protection Organization (EPPO)

- [EPPO Global Database](#)
- [Pest posters and leaflets](#)
- [Emerald Ash Borer \(*Agilus planipennis*\) network](#)
- [EPPO Pest Risk Analysis](#)
- [Communications material](#)

European Union

- [European Alien Species Information Network \(EASIN\)](#)
- [European Food Safety Authority \(EFSA\)](#)
- [EFSA Pest Survey Cards](#)

Linnaeus University, Sweden

- COST Action: [Urban Tree Guard](#)

International Plant Health Useful links

Explore the selection of useful plant health & biosecurity resources provided by our international IPSN members & partners:



IPSN

International Plant Sentinel Network

Please contact us if you want to share your information:
<https://www.bgci.org/our-work/networks/ipsn/>

United States Forest Service (USFS)

- [International Programs: Invasive species](#)
- [Plant Pest & Disease information](#)

Bugwood, USA

- [Information resources Hub](#)

The Sentinel Plant Network, USA

- [Pest resources](#)
- [Education materials](#)



Plant Health Australia

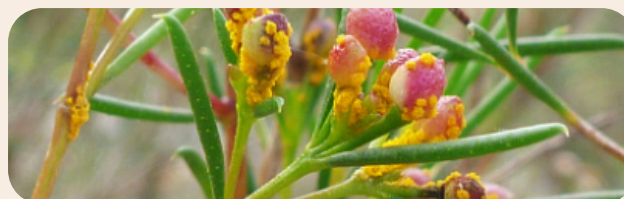
- [The Biosecurity Portal](#)

Ministry of Primary Resources, New Zealand

- [Biosecurity](#)
- [Register & list of pests & diseases](#)
- [Myrtle rust Programme](#)

B3, New Zealand

- [Global change and New Zealand biosecurity](#)



FABI, South Africa

- [Sentinel Plant Network](#)
- [Diagnostic clinic](#)
- [Polyphagous Shot Hole Borer in South Africa](#)

SENASA, Argentina

- [Sistema nacional de vigilancia y monitoreo de plagas](#)
- [Listado de plagas](#)

INTA, Argentina

- [Guía de lepidoptera de importancia económica](#)
- [Guía para el manejo de antropódos perjudiciales](#)