



IPSN

International Plant
Sentinel Network

IPSN NEWSLETTER

July 2024



New members

We welcome our newest IPSN member.

We are excited to have our first Colombian member joining the network:

[Jardín Botánico de Medellín, Colombia](#)

To learn more about the reach of our network:

[Click to explore our member's map](#)

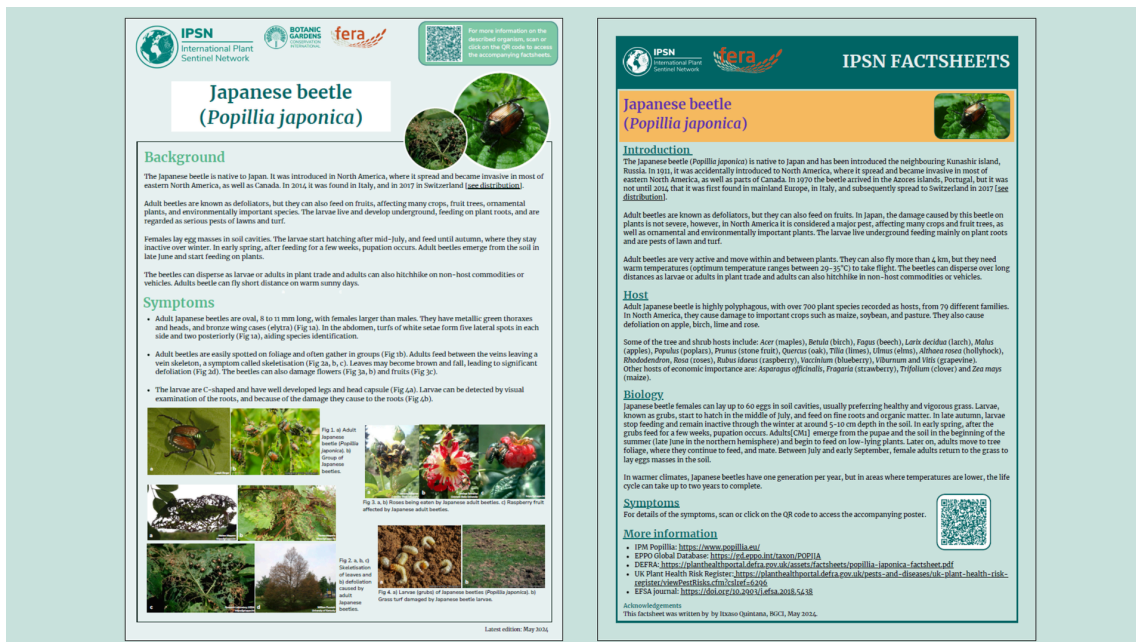


Resources

New Japanese beetle poster & factsheet

We have created a new poster and factsheet for the **Japanese beetle** (*Polillia japonica*), an easily identifiable pest with significant impact on plants with high economic and environmental value.

Learn more about the pest and its diagnostic symptoms by following the links to our [poster](#) and [factsheet](#).



All produced posters for key pest and diseases of interest can be found [here](#). The accompanying factsheets with more detailed information can be found [here](#).

These posters and factsheets can be printed out and displayed in your organisation, as well as shared with other contacts or partners who might be interested.

Biosecurity information resources for botanic garden & arboreta

As part of our IPSN Small Grant projects in 2023, new **biosecurity resources** were developed, providing **essential information on risk pathways and other biosecurity useful information** for botanic gardens and arboreta (created by Ginette Alexander from the Yorkshire Arboretum).

The new resources include:

- 1) A **Poster**, providing essential guidance on key mitigation measures to prevent the introduction and spread of plant pests and diseases into botanic gardens and arboreta that can be also used as a public awareness tool.
- 2) A **Leaflet**, that offers further links to biosecurity resources to enhance the understanding and application of effective biosecurity measures in plant collections.

[Access the poster](#) and the [accompanying leaflet](#).



Surveillance projects updates

Kick-start workshop with Belgium gardens

In May we held the kick start workshop with botanic gardens in Belgium, initiating the targeted surveillance activities for 2024. This year nine botanic gardens are participating in the project that aims at monitoring the presence/absence of the following pests and diseases in its key plant host species:

- Oak borer beetles
- Rose rosette virus
- Pine tortoise scale
- Japanese beetle
- Beech leaf disease/ Petrakia leafspot



At the end of this month, as each year, we will held a post-spring survey workshop to discuss the observations reported during the northern hemisphere spring with our partners in the Botanic Gardens/arboreta, National Plant Protection Organization (NPPO) and our diagnosticians. Surveillance activities will continue through the summer months!

Emerald Ash Borer (EAB) monitoring in Eastern Europe

Botanic gardens in Eastern European countries have begun their monitoring activities for EAB in *Fraxinus* species in their collections. This marks the fourth consecutive year of these crucial initiative which includes setting traps for EAB interception and visually inspecting specimens for any signs of the beetle or Ash Dieback (ADB), which makes trees more susceptible to attacks.

Currently, 10 gardens in seven different East European countries are participating in the monitoring. If your garden/institution is located in the region and **would like to participate or engage with the project**, do not hesitate to get in touch for further details.

[Click to get in touch](#)



Biosecurity Initiatives

BGCI's Biosecurity certification

Biosecurity is essential in managing botanic gardens and arboreta, ensuring the prevention and control of harmful pests and pathogens in collections. To support the implementation of best biosecurity practices, Botanic Gardens Conservation International (BGCI), has developed a Biosecurity Compliance Certification.

This certification sets a base baseline standard for biosecurity and phytosanitary practices in institutions managing plant collections, including guidance to set a biosecurity policy, information on key measures to reduce pest and pathogen spread and advice on key legislation related to national and international plant material movement.

[Click here](#) to learn more about the certification and how to apply.



Biosecurity Pathways Risk Analysis (PRA) Tool project

As part of our core activities in 2024-25, we are carrying out a review of the Pathways Risk Analysis (PRA) Tool developed by our partners in Fera and the Yorkshire arboretum. The aim of the project is to assess its methodology in relation to other available tools, as well as evaluating its relevance and usability to carry out a PRA by non-specialist staff in Botanic gardens and other plant products managing organisations.

On the 25th of June, the kick start workshop took place to introduce the tool to key stakeholders, present the different working groups and encourage members to participate and provide their feedback.

Over the next few months, we will engage with experts and end-users to assess and test the current version of the PRA Tool and the necessary guidance

documents, with the final aim of identifying key areas for further development.

For further information on the key working groups and on how **to engage with the different aspects of the review**, please contact us before **Friday 19th July**, or fill in the following form:

[Click to access the registration form](#)



UK Garden Sentinel Network (UKGSN)

Tree Health Monitoring Pilot

We are thrilled to announce that the **UKGSN**—a citizen science collaboration between PlantNetwork, Observatree, and IPSN—has now launched its **2024 pilot activity: Monitoring Target Pests and Diseases Across UK Trees**.

For this first activity, we are calling botanic garden's volunteers and citizen scientists to join our mission of monitoring the health of UK trees by recording the presence or absence of three specific pests and diseases (i.e. great spruce bark beetle, elm-zig-zag sawfly and European mountain ash ring-spot associated virus) and submitting their observations through [Tree Alert](#).

[Click for more information on how to participate in the pilot activity](#)

Join us!
Monitor UK tree's health using TreeAlert

UKGSN

Great Spruce Bark Beetle

Elm zig-zag sawfly

European mountain ash ringspot associated virus

IPSN International Plant Sentinel Network

Observatree monitoring tree health

PlantNetwork Connecting gardens, making sense

The graphic features a background image of people in a forest. It includes three circular inset images: a dark beetle on wood, a green leaf with a zig-zag pattern, and a green leaf with a ring spot. Logos for IPSN, Observatree, and PlantNetwork are at the bottom.

The UKGSN initiative was first presented in April. This UK focus initiative aims to engage and educate garden professionals, volunteers and visitors on tree health. [Watch again](#) the first UKGSN webinar, featuring the launching and introduction to the initiative.



News

BG journal on Biosecurity, Pest and Diseases

The upcoming issue of the BG journal, an international journal about conservation work in botanic gardens edited by BGCI, will be focusing on biosecurity and pest & diseases surveillance in botanic gardens and arboreta.

This special edition will showcase a range of articles from our partners, providing further insights, expertise and examples of key initiatives and activities with regards to biosecurity and plant health monitoring. It will also feature the International Plant Sentinel Network (IPSN), highlighting its crucial role as a global network dedicated to monitor, support and share information with regards to phytosanitary issues.

We believe this issue will be of great interest to you so **Stay tuned for its release next month!**

The Tree Health Centre at the Yorkshire Arboretum launches virtual reality experience, educating future generations on tree health

This Tree Health virtual reality takes you on a journey of discovery around a virtual Yorkshire Arboretum giving first-hand experience of the harmful Great Spruce Bark Beetle.

Promising to be like nothing else in the world – it uses cutting-edge technologies, puzzles and gamification to bring alive the significant economic damage caused to forests and woodlands by these beetles and demonstrates why good plant biosecurity is vital as we combat climate change.

The project was funded by the Department for Environment, Food & Rural Affairs (Defra) and brought together by the Yorkshire Arboretum, Askham Bryan College, VISR and Fera Science Ltd. and is part of a broader approach to educate and build awareness of tree health threats to future generations.

[Click to learn more about Tree Health in Virtual Reality](#)

Call for members' news

We have now included in our newsletter a section for news submitted by the network members.

Through this we hope to facilitate engagement and help highlight members' initiatives, successes and valuable expertise and keep up to date with each other's activities.

If you have news relating to phytosanitary activities, notable events or relevant biosecurity concerns/collaboration calls which you wish to promote/want us to include in the next issue, please submit a short paragraph (<200 words) with images to itxaso.quintana@bgci.org, and we will share the news in the next newsletter in Sep 2024.



Events update

UPCOMING EVENTS

BGCI Webinar: Tree Health and Biosecurity and Marsh Awards Ceremony – 11th of July

The next BGCI webinar will be about: Tree Health and Biosecurity – teaching and engagement activities from the Tree Health Centre at The Yorkshire Arboretum.

During this webinar, Ginette Alexander, Head of Tree Health and Training at the Yorkshire Arboretum, will provide an overview of the teaching and engagement

initiatives from the Tree Health Centre at The Yorkshire Arboretum over the past 18 months.

The webinar will also celebrate the excellent work Åsa Krüger and Stina Weststrand who received the Marsh Award for Education in Botanic Gardens for their magnificent podcasts for the Gothenburg Botanic Garden.

The event has already reached full capacity, but don't worry! The recording will be freely available on BGCI's website. Access details will be shared through BGCI's and IPSN's social media channels. Keep an eye out for the details!

The poster features a dark teal background. On the left, there is a circular logo with a tree silhouette made of small icons, next to the text 'BGCI Webinars'. Below this, the main title 'BGCI Webinar: Tree Health and Biosecurity & Marsh Award Ceremony' is written in white. At the bottom left, there are three logos: 'THE YORKSHIRE ARBORETUM' (with a tree icon), 'BOTANISKA GOTHENBURG BOTANICAL GARDEN', and 'MARSH Charitable Trust'. The date and time '11 July 2024 - 10:00 AM BST' are at the bottom left. On the right side, there is a photograph of a woman with glasses smelling a green leaf. Below that is a smaller photo of two women, with the text 'BOTANISKA TRÄDGÅRDSPODDEN' overlaid.

8th Global Botanic Gardens Congress – 6th to 9th of August 2024

Join us on the 8th Global Botanic Gardens Congress, taking place in Singapore from 6 to 9 August 2024! This event will bring together leading experts, researchers, practitioners, and enthusiasts from around the world to share knowledge, insights, and best practices in botanical garden management, conservation, and research.

Registration is open until 31st July 2024.

[Register here!](#)



Plant Pathology 2024 (PPATH2024) - 11th to 13th of September 2024

In September, the British Society for Plant Pathology will be hosting their annual meeting at Mathematical Institute in Oxford, UK.

Follow [the link](#) for more information and registration details.

PAST EVENTS

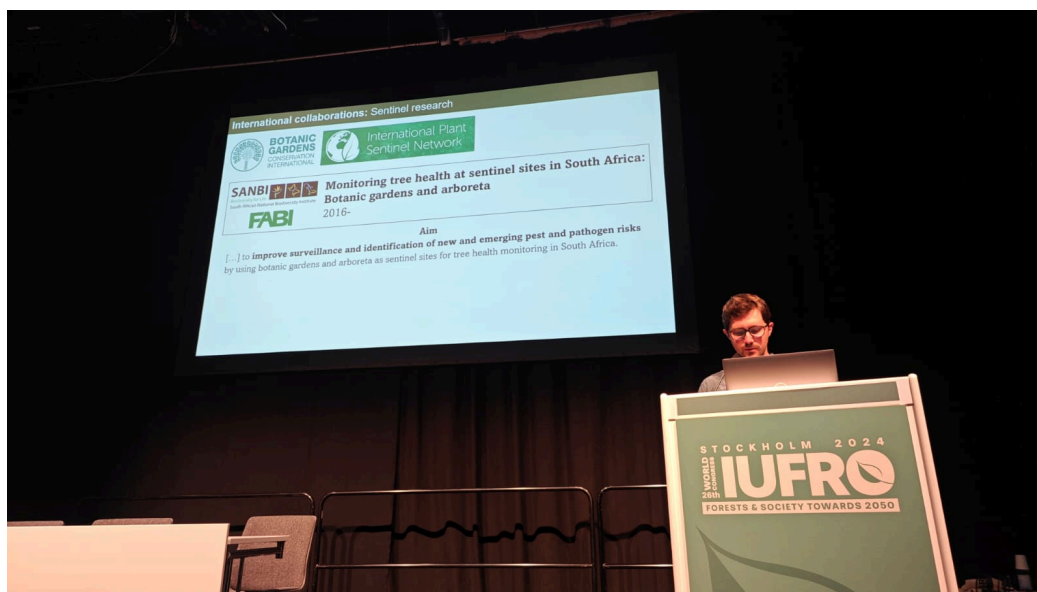
International Union for Forest Research Organisations (IUFRO) - 23th to 29th June 2024

In June, together with our colleagues from USFS, the IPSN co-lead a mini-symposium on "*Resilience of Forest Biodiversity to Climate Change and Pests*" as part of the IUFRO Global Congress in Stockholm, Sweden.

As part of this session a variety of long and short talks were presented on topics ranging from civic engagement, red listing, conservation in seed banks as well as the role of public and botanic gardens, and wild, urban, and agroforestry landscapes. Finalising with an expert panel sharing their experiences and insights in this area and discussing with the audience their visions and hopes for the future.

This session was not only highly informative and engaging but also underscored the importance and critical significance of such research and initiatives in advancing plant health and biodiversity conservation.

We thank all presenters and pannelist for their participation and input and look forward to further opportunities for collaboration and engagement in the near future!



Plant Health Week & International Plant Health Day – 8th to 12th of May 2024

During this year’s Plant Health Week and for the International Plant Health Day, the IPSN shared valuable information and resources related to plant health, surveillance activities and biosecurity best practices.

[Click here to catch up on the shared information](#)

UK members meeting - 15th April 2024

In April, we hosted our first IPSN UK group meeting of the year. During this online gathering, we provided an overview of the IPSN projects, new resources and activities from 2023. It was also an opportunity for members and botanic gardens across the UK to present past, ongoing and upcoming projects of interest. Suggestions and ideas with regards to topics of interest for our next in-person meeting were also shared and we will be providing a further update with regards of the location and timing of our autumn in-person meeting in coming months.

***Remember: Update your BGCi [GardenSearch](#) profile and collection information in [PlantSearch](#).** Updating your GardenSearch profile and uploading your living and seed collections into PlantSearch will facilitate the reciprocal use of our tools, as

well as facilitating the identification of gardens with specific plants of interest for IPSN projects.

Please find more information on GardenSearch, and how to update your profile [here](#).

More information on PlantSearch can be found [here](#), and access [the guide](#) for information how to upload collection information including explicative videos.



Do share any information you may have on new and emerging pests and diseases in your area with the IPSN through our listserver/via email and keep up to date with all IPSN news by following us on Twitter / X @IPSN_BGCI



Designed with Beefree